

WAHL CLIPPER CORP.

STERLING, ILLINOIS

TITLE: 08881 Switchblade

NO. 8881

DRAWN	DATE	WAHL ENGINEERING APPROVAL	DATE
DJS	7/31/06		
DRAFT	DATE	Wahl Quality Approval	DATE
1			
SHEET		Wahl Service Center Approval	DATE
	1 of 3		

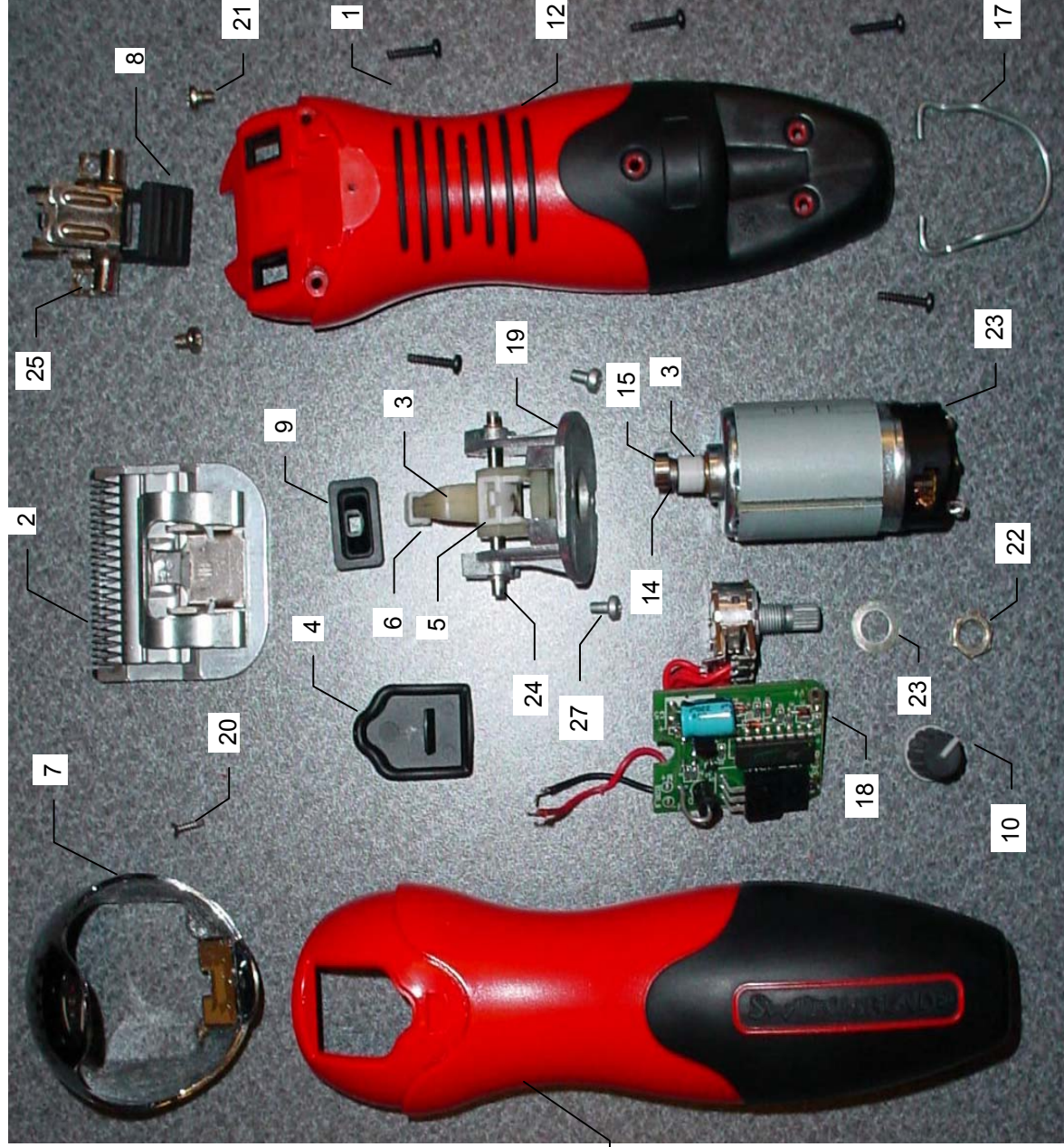
NO.	REVISIONS	BY	DATE	APPROVED

ITEM DESCRIPTION

- 1 00492-200 Screw 3 X 1/2 Type 25(Pan)
- 2 02358 Detachable Blade Assembly #10
- 3 88011 Drive Finger
- 4 88013 Cover
- 5 88181 Cam Follower
- 6 88200 Drive Tip
- 7 88301-360 Front Cover Chrome Lasered
- 8 88700 Blade Release Button
- 9 90400-001 Gasket
- 10 92005 Knob
- 11 92600 Top Case Switchblade
- 12 92630 Bottom Case

Motor Assembly Contains 13,14,15,16 To Be Assembled At Wahl

- 13 88010 Cam Sleeve
- 14 93185 Cam
- 15 93190 Cam Bearing
- 16 96702 Disc Motor 12V 5000 Rpm
- 17 94284-001 Hanger Hook
- 18 95290-003 PcbBoard Assembly Rotary
- 19 95300-100 Motor Mount Assembly
- 20 96433 Screw (#2 X .328)
- 21 96452 Screw (#6 32 X .203
- 22 96466 Switch Nut
- 23 96467 Switch Washer
- 24 97461 Guide Pin
- 25 97749-100 Hinge Assembly With Torsion Spring
- 26 97810-100 Trans former SPS Fixed SR (12 V) 16 Ft
- 27 99716 Motor mount Machine Screw



WAHL CLIPPER CORP.

STERLING, ILLINOIS

TITLE: 08881 Switchblade

NO. 8881

Specifications

1. Test Voltage..... 120 Volts 60 HZ
2. Wattage..... 33 Watts Maximum
3. Blade Speed..... Lowest Speed Setting With X block After Break In 2500 - 3500 RPM. May Vary With Different Blade Sets
Highest Speed Setting With X block After Break in 3780 - 4620 RPM. May Vary With Different Blade Sets
4. Blade Travel / Stroke..... 0.150"
5. Blade Tension..... 56-72 in/oz on #10 Blade Set
6. Blade Offset..... .087" - .107" on #10 Blade Set
7. Cutting..... Must cut Wahl certified media
8. Cutting System..... Comb: High grade steel Per Wahl Bill Of Material
Cutter: High grade steel Per Wahl Bill Of Material
9. Cord..... Polarized Round Professional
10. Drive..... Rotary Motor
11. Switch Function..... Variable Speed
12. Noise Level..... No Varying or irritating noise
13. Housing material..... Base: Per Wahl Bill of Material
Lid: Per Wahl Bill Of Material
14. Clipper Approvals..... UL



WAHL CLIPPER CORP.

STERLING, ILLINOIS

TITLE: 08881 Switchblade

NO. 8881

Appearance

1. No rust on any exposed metal surfaces like: blades or screws.
2. All visible surfaces, logo must be free of pits, chips, cracks, scratches, sink marks, flash, color deviations, and imperfections.
3. Must be free of dirt, debris, and offensive odor: Clipper, packaging and all accessories.
4. Excess oil should be wiped off of the clipper.
5. Logo and artwork to be legible.
6. Cord wire tie should be secured around cord and not fall off or allow cord hank to fall apart.

Construction

1. All screws must be tight and not stripped.
2. Clipper to have the following approvals: UL

Performance (At Proper Voltage and Frequency)

1. Wattage 33 Max
2. Blades must have a .087" to .107" offset
3. Blade Tension must be 56 - 72 in/oz.
4. No Varying or irritating noise
5. Clipper must be able to cut Wahl certified media.

Quality Assurance

1. After being approved, no further changes in material, packaging, design or performance may be made without written permission from WAHL CLIPPER CORPORATION.