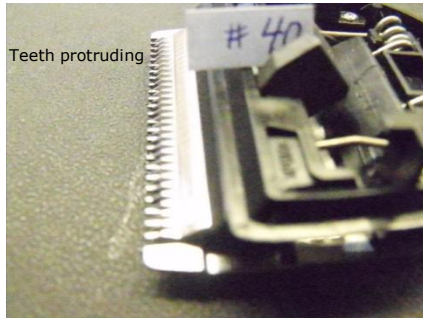


## Suggestions for the Wahl 5-N-1 Blade

Northern Tails Sharpening, Inc 251-232-5353 [www.northerntails.com](http://www.northerntails.com)

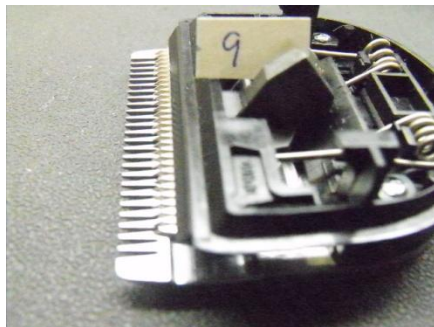
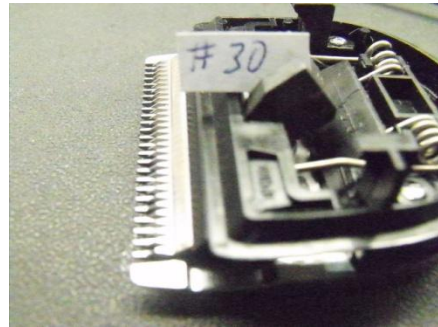
I've found by using this blade in my own grooming shop, we gathered information to make these suggestions that can help you get better use from this blade.

The 5-N-1 blade was not designed to replace the A5 clipper and the blades normally used in dog grooming, it's a trimmer blade. The blade is made with 2/3 plastic with a wire spring holding the cutter down. Pushing this blade through tough coat can make the cutter flutter and drag, more so with a comb on. The cutter blade has very short teeth as opposed to the long cutting teeth on your A5 blades. These teeth can round out in a couple weeks if used on every dog every day. Just because some groomers are having luck replacing their regular clipper with the 5-N-1, doesn't mean everyone will. With that noted, these suggestions may help you understand some important points about this blade you weren't aware of. The tension and cutter alignment of this blade are preset by the design and can't be adjusted by a sharpener.



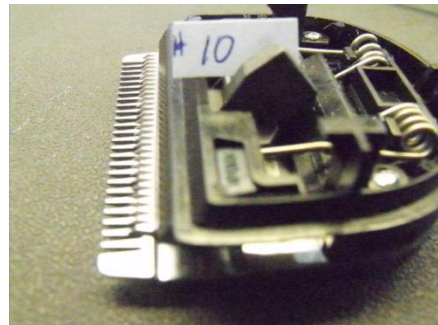
See how close the cutter teeth are to the edge of the bottom blade? The alignment on this blade is crooked at the far end. If alignment is crooked, the cutter teeth can protrude past on one side and cut. This setting cuts very very low like a #50 blade. Check your blade this way for alignment.

In the next setting back from #40, the cutter teeth are well behind the teeth of the bottom blade. If the cutter alignment is crooked, all the cutter teeth are usually behind the the end of the bottom blade. This setting cuts more like a #40 to me. Try this and compare it yourself.



In the wide setting (#9), the cutter teeth may not protrude into the slots of the bottom blade enough to do proper cutting. In this picture, just the very tips of the cutter teeth are in the slots enough to cut. If you push too hard, the blade can drag or snag hair instead of cutting cleanly. Check your blade. Don't use this setting with a comb on. The #9 setting may not work properly with continued sharpening.

Using the next setting in from the #9 has three benefits. First, it lets the entire teeth of the cutter in the slots of the bottom blade enough to produce clean cutting without snagging or dragging. Secondly, this position cuts closer to a #9/10 than the wide open setting to me. Third, no matter how many times the blade is sharpened, the #10 position works.



NOTE: When using the comb attachments, the best setting is right in the middle. Try not to push too fast, and remember to grease the cutter notch along with oiling. \*\* NEVER spray coolants on this blade, most contain acetone which eats the plastic.